

GETTING SETUP - (this wil help you connect to the dclug channel)

When you first load Xchat you will be presented with the following screen (server list may vary), for the most part you will use on of these, NB serfer.co.uk and irc.flashtek-uk.com have been added by me so you won't see them. If you need to add a new server hit the ADD button and enter the server name e.g irc.flashtek-uk.com, now press enter.



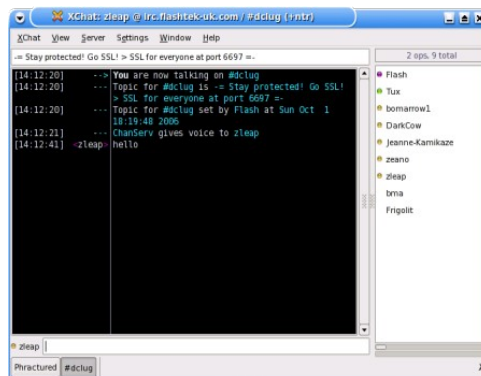
Highlight the newly added server and press edit, and make sure and replace newserver with the newly added server name AND port number, so in this case enter irc.flashtek-uk.com/6667 or if you want to use a secure server (recommended) use 6697. Once done, click close, the bottom half of this dialog allows you to pass instructions to the server after connection. In my case I am auto joining #dclug. thats all you need really.

You do need to register with nickserv so once you have done this you can use the command box to auto identify, /msg nickserv identify then add password in the box below. (which I have done)

The second command in this box is where I am sending a message to chanserv in order to register as channel owner on #vanlug, This is ONLY required if you have set up your own channel on the same server and need to id as owner so you have channel owner status. so you don't need to enter this part. It's just in the screen shot.



As I don't use windows the above instructions are meant for Xchat under any popular Linux distribution, I use kanotix which is based on debian sid.



xchat in action

Note this file has been taken from my old website, copied and pasted, with pictures imported.

Written by Paul Sutton - www.zleap.net